



Ashdown Court, Horsham, West Sussex RH13 6TE
£1,250 PCM

& LINES
James

1 Ashdown Court

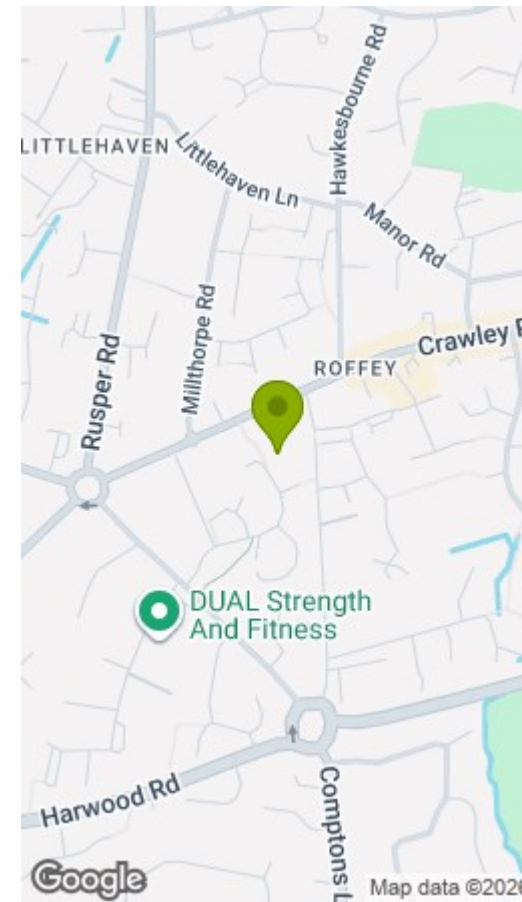
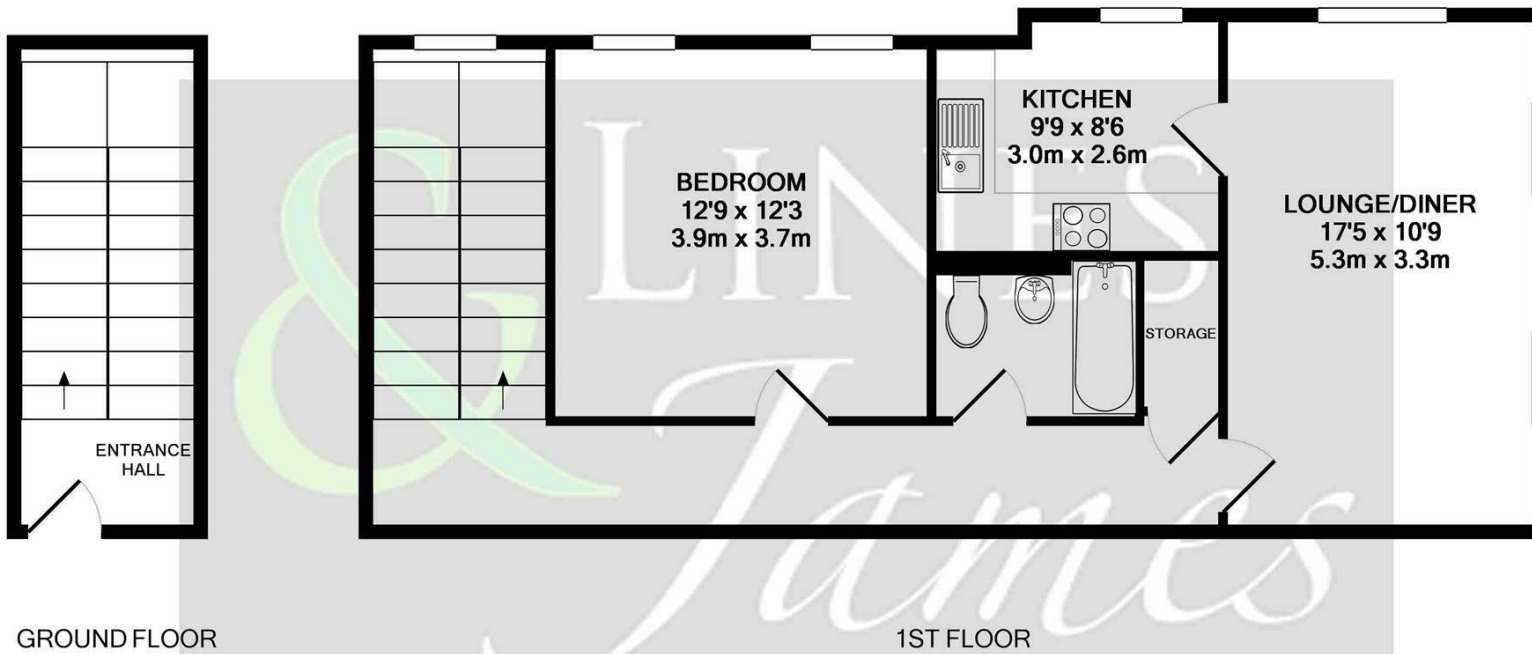
A rarely available spacious one bedroom first floor maisonette situated in the peaceful development of Ashdown Court.

Lines & James are delighted to offer to the market this very spacious one bedroom first floor maisonette, the property in in the process of being redecorated and accommodation comprises: Entrance lobby with spaces for coats and shoes with stairs to the first floor, there is a landing area before reaching the hallway where there is a useful storage cupboard. Dual aspect sitting room, fitted kitchen with appliances, large bedroom and bathroom with shower over bath.

The property also benefits from allocated parking, gas central heating and well maintained attractive communal grounds

- ONE BEDROOM
- SPACIOUS FIRST FLOOR MAISONETTE
- PEACEFUL DEVELOPMENT
- ALLOCATED PARKING
- UNFURNISHED
- EPC RATING E
- COUNCIL TAX BAND C
- 12 MONTHS +
- DEPOSIT £1500.00
- AVAILABLE NOW





Measurements are approximate and not to scale. Bedroom measurements do not take into account the fitted wardrobes. This plan is for illustrative purposes only and should only be used as such by any prospective tenant. No responsibility is taken for any error, omission or mis-statement.
Made with Metropix ©2017

Energy Efficiency Rating		Environmental Impact (CO ₂) Rating	
	Current	Potential	
Very energy efficient - lower running costs			Very environmentally friendly - lower CO ₂ emissions
(92 plus) A			(12 plus) A
(81-91) B			(11-21) B
(69-80) C			(9-40) C
(55-68) D			(5-60) D
(39-54) E	53	60	(3-54) E
(21-38) F			(21-38) F
(1-20) G			(1-20) G
Not energy efficient - higher running costs			Not environmentally friendly - higher CO ₂ emissions
England & Wales	EU Directive 2002/91/EC		England & Wales
			EU Directive 2002/91/EC



24 Worthing Road, Horsham, West Sussex, RH12 1SL,
Tel: 01403 210088
lettings@linesandjames.com
www.linesandjames.com

